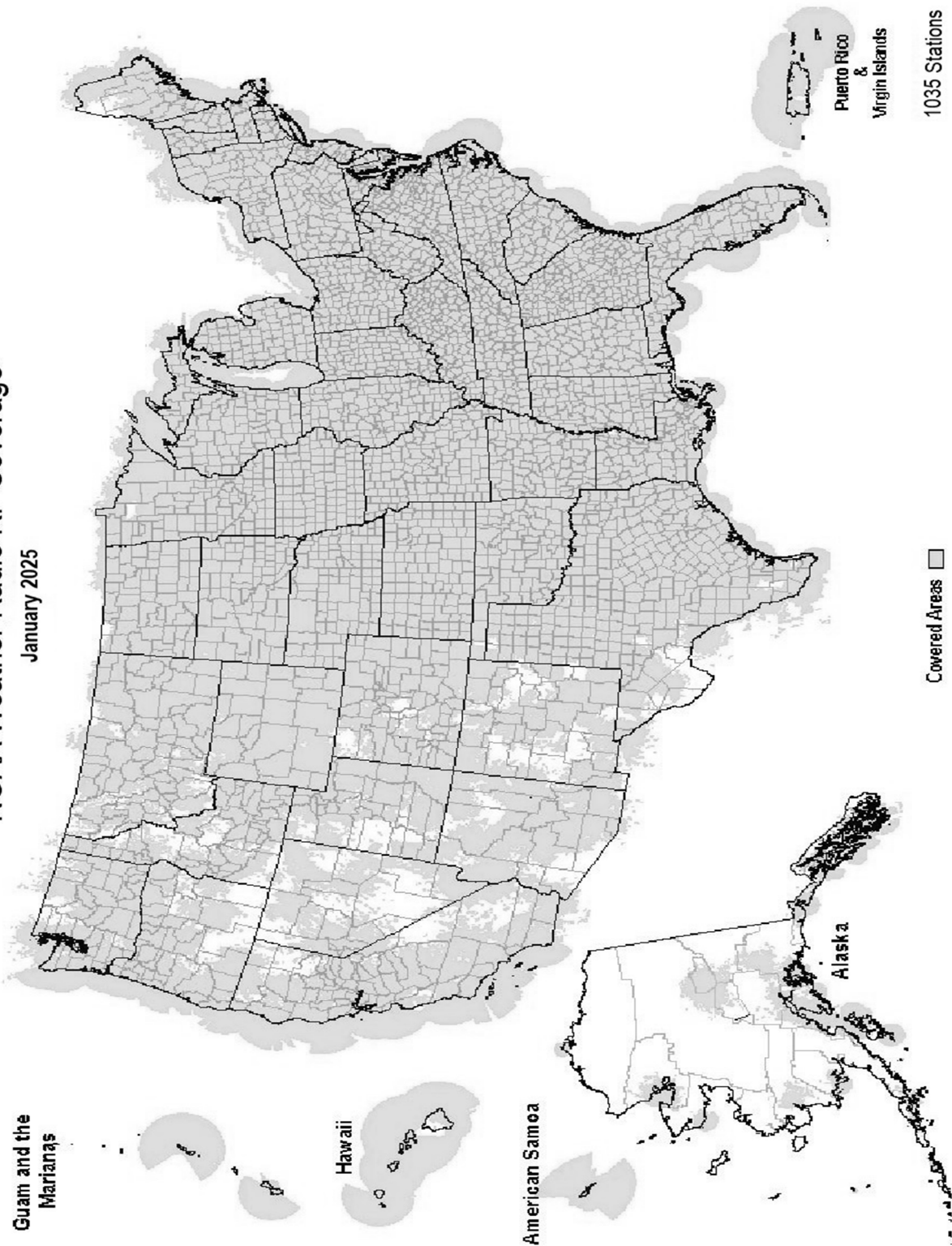


# NOAA Weather Radio RF Coverage

January 2025



Guam and the  
Marianas

Hawaii

American Samoa

Alaska

Covered Areas

1035 Stations



NOAA/PA 94062  
Rev January 2025



## The Voice of NOAA's National Weather Service

< Over 1000 Transmitters >

Broadcasting Continuous  
Weather Information on the  
Following Frequencies:

- 162.400 MHz
- 162.425 MHz
- 162.450 MHz
- 162.475 MHz
- 162.500 MHz
- 162.525 MHz
- 162.550 MHz

U.S. Department of Commerce  
National Oceanic and Atmospheric Administration  
National Weather Service

<http://www.weather.gov/nwr/>

# NOAA WEATHER RADIO

The Voice of NOAA's National Weather Service

<http://www.weather.gov/nwr>

NOAA Weather Radio is a service of the National Oceanic and Atmospheric Administration (NOAA) of the U.S. Department of Commerce. As the "voice of the National Weather Service," it provides continuous broadcasts (24 hours a day) of the latest weather information from local National Weather Service offices. Weather messages are repeated every 4 to 6 minutes and are routinely updated every 1 to 6 hours or more frequently in rapidly changing local weather or if a nearby natural hazardous or manmade condition exists.



The regular broadcasts are specifically tailored to weather information needs of the people within the service area of the transmitter. For example, in addition to general weather information, stations in coastal areas provide information of interest to mariners. Other specialized information, such as hydrological forecasts and other climate data may be broadcast.

During severe weather, National Weather Service forecasters can interrupt the routine weather broadcasts and insert special warning messages concerning imminent threats to life and property. The forecaster can also add special signals to warnings that trigger "alerting" features of specially equipped receivers. In the simplest case, this signal activates audible or visual alarms, indicating that an emergency condition exists within the broadcast areas of the station being monitored, and alerts the listener to turn up the volume and stay tuned for more information. More sophisticated receivers are automatically turned on and set to an audible volume when an alert is received.

In the most sophisticated alerting system, NOAA Weather Radio Specific Area Message Encoding (SAME), digital coding is employed to activate only those special receivers programmed for specific emergency conditions in specific area, typically a county. SAME can activate specially equipped radio and cable television receivers and provide a short text message that identifies the location and type of emergency. SAME is the primary activator for the FCC Emergency Alert System (EAS).

To program NWR SAME receivers with the proper county(s) and marine area(s) of choice, you need to know the 6-digit SAME code number(s) for that county(s). Once you have your code number(s), follow the manufacturer's directions for programming your NWR SAME receiver. You can obtain your SAME code numbers by dialing:

**888-NWR-SAME (888-697-7263) – Voice & TTY/TTD Accessible**

Under a January 1975 White House policy statement, NOAA Weather Radio was designated the sole Government-operated radio system to provide direct warning into private homes for both

RHODE ISLAND	
Providence .....	162.400
SOUTH CAROLINA	
Aiken .....	162.450
Aynor .....	162.400
Barnwell .....	162.500
Beaufort .....	162.450
Charleston .....	162.550
Cheraw .....	162.450
Columbia .....	162.400
Cross .....	162.475
Florence .....	162.550
Georgetown .....	162.500
Greenville .....	162.550
Kirksey .....	162.425
Orangeburg .....	162.525
Rock Hill .....	162.425
Savannah .....	162.400
Sumter .....	162.425

SOUTH DAKOTA	
Aberdeen .....	162.475
Arlington .....	162.525
Faith .....	162.475
Firesteel .....	162.425
Hot Springs .....	162.425
Lead .....	162.525
Lowry .....	162.500
Mitchell .....	162.450
Philip .....	162.450
Pickstown .....	162.425
Pierre .....	162.400
Porcupine .....	162.500
Rapid City .....	162.550
Reliance .....	162.525
Sioux Falls .....	162.400
South Shore .....	162.425
Wessington .....	162.550
White River .....	162.550

TENNESSEE	
Bristol .....	162.550
Centerville .....	162.450
Chattanooga .....	162.550
Clarksville .....	162.500
Clifton .....	162.500
Cookeville .....	162.400
Dyersburg .....	162.500
Hickman .....	162.500
Jackson .....	162.550
Knoxville .....	162.475
La Follette .....	162.450
Lafayette .....	162.525
Lawrenceburg .....	162.425
Lobelville .....	162.525
Memphis .....	162.475
Nashville .....	162.550
Shelbyville .....	162.475
Spencer .....	162.450
Vale .....	162.450
Waverly .....	162.400
Winchester .....	162.525

TEXAS	
Abilene .....	162.400
Alpine .....	162.550
Amarillo .....	162.550
Austin .....	162.400
Bay City .....	162.425
Beaumont .....	162.475
Big Spring .....	162.475
Brownsville .....	162.550

Bryan .....	162.500
Burkeville .....	162.425
Carrizo Springs .....	162.550
Center .....	162.525
Childress .....	162.525
Cisco .....	162.500
Coleman .....	162.475
Corpus Christi .....	162.550
Corsicana .....	162.525
Cumby .....	162.500
Dalhart .....	162.425
Dallas .....	162.400
Del Rio .....	162.400
D'Hanis .....	162.525
Dickens .....	162.500
Dilley .....	162.500
El Paso .....	162.475
El Paso Spanish .....	162.550
Fort Worth .....	162.550
Galveston .....	162.550
Gilmer .....	162.425
Gonzales .....	162.525
Guadalupe Mt Nat'l. Park .....	162.525
Junction .....	162.475
Kerrville .....	162.450
La Grange .....	162.500
Laredo .....	162.475
Llano .....	162.425
Lubbock .....	162.400
Lufkin .....	162.550
Marietta .....	162.525
Miami .....	162.450
Midland/Odessa .....	162.400
Milano .....	162.525
Mineral Wells .....	162.525
Muenster .....	162.425
New Taiton .....	162.450
Onalaska .....	162.500
Ozona .....	162.500
Palestine .....	162.450
Paris .....	162.550
Pecos .....	162.450
Perryton .....	162.475
Pharr .....	162.400
Pharr Spanish .....	162.475
Plainview .....	162.450
Port O'Connor .....	162.475
Richland Springs .....	162.525
Richmond .....	162.475
Rio Grande City .....	162.425
Riviera .....	162.525
San Angelo .....	162.550
San Antonio .....	162.550
Santa Maria Spanish .....	162.450
Seguin .....	162.475
Seminole .....	162.425
Sherman .....	162.475
Stephenville .....	162.450
Stinnett .....	162.400
Stratford .....	162.525
Summerfield .....	162.500
Sweetwater .....	162.425
Texarkana .....	162.550
Three Rivers .....	162.450
Throckmorton .....	162.425
Tomball .....	162.400
Tyler .....	162.475
Uvalde .....	162.425
Victoria .....	162.400
Waco .....	162.475
Wichita Falls .....	162.475

UTAH	
Bear Lake .....	162.500

Castle Dale .....	162.500
Coalville/ Park City .....	162.475
Escalante .....	162.425
Lake Powell .....	162.550
Logan .....	162.400
Manti .....	162.425
Milford/Cedar City .....	162.400
Moab .....	162.475
Monticello .....	162.450
Salt Lake City .....	162.550
St. George .....	162.475
Tabiona .....	162.550
Tooele (South Mountain) .....	162.450
Tooele (Vernon Hills) .....	162.525
Vernal .....	162.400
Wendover .....	162.475

VERMONT	
Burlington .....	162.400
Castleton .....	162.500
St. Johnsbury .....	162.425
Windsor .....	162.475

VIRGIN ISLANDS	
St. Thomas .....	162.450

VIRGINIA	
Accomack .....	162.525
Covesville .....	162.450
Fredericksburg .....	162.425
Heathsville .....	162.400
Lynchburg .....	162.550
Manassas .....	162.550
Norfolk .....	162.550
Providence Forge .....	162.500
Richlands .....	162.425
Richmond .....	162.475
Roanoke .....	162.475
Sand Mtn .....	162.450
South Boston .....	162.525

WASHINGTON	
Astoria .....	162.400
Capitol Peak .....	162.475
Cle Elum .....	162.400
Davis Peak .....	162.525
Dayton .....	162.525
Forks .....	162.425
H Street - Blaine Area .....	162.525
Neah Bay .....	162.550
Okanogan .....	162.525
Plymouth .....	162.425
Puget Sound Marine .....	162.425
Randle .....	162.425
Richland .....	162.450
Seattle .....	162.550
Spokane .....	162.400
Wenatchee .....	162.475
Yakima .....	162.550

WEST VIRGINIA	
Backbone Mountain .....	162.450
Beckley .....	162.550
Charleston .....	162.400
Clarksburg .....	162.550

Garfield .....	162.500
Gilbert .....	162.475
Greggs Knob .....	162.500
Hinton .....	162.425
Monterville .....	162.525
Moorefield .....	162.400
Morgantown .....	162.475
Sutton .....	162.450

WISCONSIN	
Ashland .....	162.525
Baraboo .....	162.450
Black River Falls .....	162.500
Coloma .....	162.400
Crandon .....	162.450
Dubuque .....	162.400
Fond Du Lac .....	162.500
Green Bay .....	162.550
Gresham .....	162.500
Janesville .....	162.425
Ladysmith .....	162.550
Madison .....	162.550
Menomonie .....	162.400
Milwaukee .....	162.400
New London .....	162.525
Park Falls .....	162.500
Prairie Du Chien .....	162.500
Racine .....	162.450
Rhineland .....	162.400
Richland Center .....	162.475
Sheboygan .....	162.525
Sister Bay .....	162.425
Spooner .....	162.475
Tomah .....	162.525
Wausau .....	162.475
Wausaukee .....	162.400
Winona .....	162.425
Withee .....	162.425

WYOMING	
Afton .....	162.475
Casper .....	162.400
Cheyenne .....	162.550
Cody .....	162.400
Dubois .....	162.450
Elk Plaza .....	162.425
Evanston .....	162.450
Gillette .....	162.500
Glendo .....	162.450
Grant Village .....	162.450
Jackson .....	162.525
Kaycee .....	162.550
Kemmerer .....	162.525
Lander .....	162.475
Newcastle .....	162.475
Pinedale .....	162.500
Rawlins .....	162.425
Rock Springs .....	162.550
Sheridan .....	162.475
Thermopolis .....	162.500
Worland .....	162.525

As of January 2025 NOAA is operating 1035 stations across the United States and its territories.

The National Weather Service requests your assistance in reporting any outages of NOAA Weather Broadcast Stations.

Please use our Toll Free Number (888) 697-7263 or send an Email to [nwroutage@noaa.gov](mailto:nwroutage@noaa.gov) to report the outage.

El Dorado Springs .....	162.475	Oshkosh .....	162.525
Eldon .....	162.550	Scottsbluff .....	162.475
Fordland .....	162.400	Shubert .....	162.500
Fredericktown .....	162.500	Sidney .....	162.500
Gainesville .....	162.425	Superior .....	162.525
Hannibal .....	162.475	Trenton .....	162.500
Hawk Point .....	162.425	Valentine .....	162.450
Hermitage .....	162.450	Yankton .....	162.500
Jamestown .....	162.425		
Joplin .....	162.550		
Kansas City .....	162.550		
La Plata .....	162.525		
Lancaster .....	162.550		
Maryville .....	162.425		
Medill .....	162.450		
Neosho .....	162.450		
Piedmont .....	162.425		
St. Louis .....	162.550		
Summersville .....	162.475		
Trenton .....	162.500		
Wardell .....	162.525		
West Plains .....	162.525		

<b>MONTANA</b>			
Baker .....	162.550		
Belgian Hill .....	162.500		
Billings .....	162.550		
Bozeman .....	162.500		
Broadus .....	162.425		
Browning .....	162.525		
Butte .....	162.550		
Circle .....	162.550		
Dillon .....	162.475		
Ekalaka .....	162.475		
Forsyth .....	162.525		
Glasgow .....	162.400		
Glendive .....	162.475		
Glentana .....	162.525		
Great Falls .....	162.550		
Hardin .....	162.450		
Havre .....	162.400		
Helena .....	162.400		
Jordan .....	162.500		
Kalispell .....	162.550		
Lewistown .....	162.500		
Livingston .....	162.525		
Malta .....	162.475		
Miles City .....	162.400		
Missoula .....	162.400		
Plentywood .....	162.475		
Poplar .....	162.425		
Ryegate .....	162.450		
Scobey .....	162.450		
Wibaux .....	162.500		
Winnett .....	162.400		

<b>NEBRASKA</b>			
Albion .....	162.500		
Bassett .....	162.475		
Beatrice .....	162.450		
Cambridge .....	162.525		
Chadron .....	162.525		
Columbus .....	162.450		
Grand Island .....	162.400		
Holdrege .....	162.475		
Lexington .....	162.425		
Lincoln .....	162.475		
Merna .....	162.500		
Merriman .....	162.400		
Mullen .....	162.425		
Norfolk .....	162.550		
North Platte .....	162.550		
Omaha .....	162.400		
Ord .....	162.525		

Stamford .....	162.400
Syracuse .....	162.550
Walton .....	162.425
Watertown .....	162.475
White Hill .....	162.525

<b>NORTH CAROLINA</b>	
Asheville .....	162.400
Buck Mountain .....	162.500
Cape Hatteras .....	162.475
Chapel Hill .....	162.550
Charlotte .....	162.475
Ellerbe .....	162.400
Ely .....	162.450
Henderson .....	162.500
Linville .....	162.450
Mamie .....	162.425
Margarettsville .....	162.450
Mount Jefferson .....	162.500
New Bern .....	162.400
Robbinsville .....	162.525
Rocky Mount .....	162.475
Saint Pauls .....	162.475
Statesville .....	162.525
Warsaw .....	162.425
Windsor .....	162.525
Winnabow .....	162.550
Winston-Salem .....	162.400

<b>NORTH DAKOTA</b>	
Bismarck .....	162.475
Cavalier .....	162.450
Dickinson .....	162.400
Fargo .....	162.475
Fort Ransom .....	162.525
Grand Forks .....	162.475
Jamestown .....	162.550
Langdon .....	162.500
Minot .....	162.400
New Town .....	162.525
Petersburg .....	162.400
Rolla .....	162.475
Scranton .....	162.525
Sheyenne .....	162.525
Steele .....	162.400
Webster .....	162.425
Williston .....	162.550
Willow City .....	162.450

<b>NORTHERN MARIANA ISLANDS</b>	
Saipan .....	162.550

<b>OHIO</b>	
Akron .....	162.400
Athens .....	162.425
Bridgeport .....	162.525
Carey .....	162.525
Chillicothe .....	162.500
Cleveland .....	162.550
Columbus .....	162.550
Dayton .....	162.475
Grafton .....	162.500
High Hill .....	162.475
Lima .....	162.400
Mansfield .....	162.450
Marietta .....	162.400
New Philadelphia .....	162.425
Otway .....	162.525
Sandusky .....	162.400
Toledo .....	162.500
Youngstown .....	162.500

<b>OKLAHOMA</b>	
-----------------	--

Attus .....	162.425
Ardmore .....	162.525
Atoka .....	162.500
Bartlesville .....	162.425
Broken Bow .....	162.450
Chickasha .....	162.450
Clinton .....	162.525
Enid .....	162.475
Grove .....	162.525
Guymon .....	162.500
Lawton .....	162.550
McAlester .....	162.475
Oklahoma City .....	162.400
Oktaha .....	162.525
Ponca City .....	162.450
Stillwater .....	162.500
Tulsa .....	162.550
Wewoka .....	162.550
Woodward .....	162.500

<b>OREGON</b>	
Bend/Redmond .....	162.500
Brookings .....	162.550
Burns Butte .....	162.475
Cape Blanco .....	162.425
Carney Butte .....	162.475
Coos Bay .....	162.400
Enterprise .....	162.425
Eugene .....	162.400
Florence .....	162.500
Fossil .....	162.550
Heppner .....	162.425
John Day .....	162.500
Klamath Falls .....	162.550
Medford .....	162.400
Mt Hebo .....	162.525
Mt. Ashland .....	162.475
Neahkahnie .....	162.425
Newport .....	162.550
Portland .....	162.550
Reedsport .....	162.525
Roseburg .....	162.550
Salem .....	162.475
Spout Springs .....	162.400
The Dalles .....	162.400
Tillamook .....	162.475

<b>PENNSYLVANIA</b>	
Allentown .....	162.400
Altoona .....	162.425
Clearfield .....	162.550
Coudersport .....	162.500
Erie .....	162.400
Harrisburg .....	162.550
Hibernia Park .....	162.425
Honesdale .....	162.450
Huntingdon .....	162.525
Johnstown .....	162.400
Meadville .....	162.475
Parker .....	162.425
Philadelphia .....	162.475
Pittsburgh .....	162.550
Reynoldsville .....	162.500
State College .....	162.475
Towanda .....	162.525
Warren .....	162.450
Wellsboro .....	162.475
Wilkes-Barre .....	162.550
Williamsport .....	162.400

<b>PUERTO RICO</b>	
Maricao .....	162.550
San Juan .....	162.400

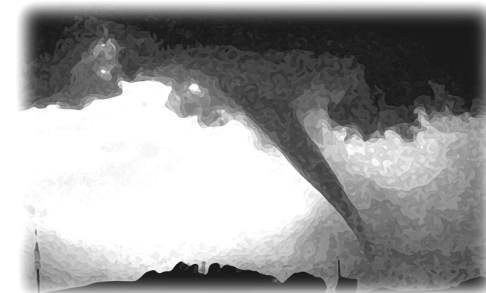
natural disasters and nuclear attack. This concept has been expanded to include warnings for all hazardous conditions that pose a threat to life and safety, both at a local and national level. As a result, NOAA Weather Radio is being better integrated with other National Weather Service systems to provide state and local emergency managers and other warning providers better access to local weather forecast offices, allowing hazard warnings of all types to be broadcast on NOAA Weather Radio within seconds

NOAA Weather Radio currently broadcasts from 1035 stations in fifty states, Puerto Rico, the U.S. Virgin Islands, American Samoa, Guam, and Saipan on seven frequencies in the VHF band, ranging from 162.400 to 162.550 megahertz (MHz). These frequencies are outside the normal AM or FM broadcast bands.

Special radios that receive only NOAA Weather Radio, both with and without special alerting features, are available from numerous manufacturers. In addition, other manufacturers are including NWR capability in a variety of receivers. NOAA Weather Radio capability is currently available on automobile, aircraft, marine, citizens band, and standard AM/FM radios as well as communications receivers, transceivers, scanners, and cable TV.

By nature and design, NOAA Weather Radio coverage is limited to an area within 40 miles of the transmitter. The quality of reception is dictated by transmitter distance, local terrain, and the quality and location of the receiver. In general, those using a high quality receiver on flat terrain or at sea can expect reliable reception beyond 40 miles. Those with standard receivers, surrounded by large buildings in cities and those in mountain valleys may experience little or no reception at considerably less than 40 miles. If possible, a receiver should be tested in the location where it will be used prior to purchase.

NOAA Weather Radio is directly available to a large portion of the U.S. and covers greater than 95 percent of the population.



If you have a question regarding the technical aspects of NOAA Weather Radio such as transmitter location, reception, and characteristics or if you are interested in becoming a partner with the National Weather Service to identify or provide local funding and/or facilities for the installation of a NOAA Weather Radio transmitter, please contact your local National Weather Service Office or send a letter to:

National Weather Service  
 Attn: Dissemination Systems Branch, W/DSB  
 1325 East-West Highway  
 Silver Spring, MD 20910

The following is a listing of operational stations by state. For specific coverage information for your local area please visit our website at: <http://www.weather.gov/nwr/>

ALABAMA

Table listing Alabama stations: Anniston, Arab, Auburn, Birmingham, Brewton, Columbus, Cullman, Demopolis, Dozier, Florence, Greenville, Henagar, Huntsville, Jackson, Louisville, Mobile, Montgomery, Oneonta, Selma, Tuscaloosa, Winfield.

AMERICAN SAMOA

Table listing American Samoa stations: Mt. Oloetele, Pago Pago.

ARIZONA

Table listing Arizona stations: Flagstaff, Globe, Grand Canyon, Greer, Kingman, Lake Havasu, Nogales, Payson Gila County N., Phoenix, Prescott, Safford, Tucson, Window Rock.

ALASKA

Table listing Alaska stations: Althorp Peak, Anchorage, Bede Mountain, Bethel, Cape Fanshaw, Cape Gull, Cape Hinchinbrook, Cold Bay, Cordova, Craig, Dillingham, Duffield Peninsula, Duke Island, East Point, Fairbanks, Glennallen, Gravina Island, Haines, Homer, Juneau, Ketchikan, Kodiak, Kotzebue, Manleyville, Marmot Island, Middle Cape, Mt. McArthur, Mt. Robert Barron, Nenana, Ninilchik, Nome, Pillar Mtn., Point Pigot, Potato Point, Raspbery Island, Rugged Island, Saint Paul Island, Sand Point, Seward, Sitka, Sitkinak Dome, Soldotna, Sukkwan Island.

ARKANSAS

Table listing Arkansas stations: Cherokee Village, El Dorado, Fayetteville, Fort Smith, Fountain Hill, Gurdon, Harrison, High Peak, Jonesboro, Little Rock, Marvell, Mena, Morrilton, Mountain View, Russell, Russellville, Springdale, Star City, Yellville.

CALIFORNIA

Table listing California stations: Avalon, Bakersfield, Big Rock Ridge, Bishop, Coachella, Coachella / Spanish, Contra Costa County, Conway Summit, El Paso Mtns., Eureka, Fresno, Grass Valley, Los Angeles, Malibu Marine, Monterey, Monterey Marine, Point Arena, Redding, Sacramento, San Diego, San Diego Marine, San Francisco.

Table listing California stations (continued): San Luis Obispo, San Simeon, Sandberg, Santa Ana, Santa Barbara, Santa Barbara Marine, Sonoma County, Susanville, Ukiah, Victorville, Willow Creek, Yosemite, Yuma.

COLORADO

Table listing Colorado stations: Alamosa, Anton, Bethune, Boyero, Canon City, Colorado Springs, Deer Trail, Denver, Dillon, Durango, Eagle, Fort Collins/Ault, Fort Morgan, Fowler, Franktown, Glenwood Springs, Grand Junction, Greeley, La Junta, Lamar, Mead/Longmont, Montrose, North Cottonwood, Pueblo, Springfield, Steamboat Springs, Sterling, Walsenburg, Wray.

CONNECTICUT

Table listing Connecticut stations: Cornwall, Hartford, Meriden, New London.

DELAWARE

Table listing Delaware stations: Lewes, Salisbury.

DISTRICT OF COLUMBIA

Table listing District of Columbia station: Washington DC.

FLORIDA

Table listing Florida stations: Belle Glade, Daytona Beach, East Point, Fort Myers, Fort Pierce, Gainesville, Hialeah Spanish, Inverness, Jacksonville, Key West, Lake City, Largo, Melbourne, Miami.

Table listing Florida stations (continued): Morriston, Naples, Ocala, Orlando, Palatka, Panama City, Pensacola, Princeton, Salem, Sebring, Sneads, Sumterville, Tallahassee, Tampa Bay, Tea Table Key, Venice, West Palm Beach, Westville.

GEORGIA

Table listing Georgia stations: Americus, Ashburn, Athens, Atlanta, Augusta, Baxley, Blakely, Blue Ridge, Brasstown Bald, Brunswick, Buchanan, Chatsworth, Clayton, Cleveland, Eastman, Eatonton, Jesup, La Grange, Macon, Metter, Pelham, Sandersville, Summerville, Thomaston, Toccoa, Valdosta, Washington, Waycross.

GUAM

Table listing Guam station: Guam.

HAWAII

Table listing Hawaii stations: Hawaii Kai, Kauai, Kulani Cone, Lihue, Maui, North Kohala, Oahu, South Point.

IDAHO

Table listing Idaho stations: Boise, Bonners Ferry, Burley, Driggs, Grangeville, Lewiston, McCall, Orofino, Payette, Pocatello.

Table listing Idaho stations (continued): Salmon, Sedgwick Peak, Sun Valley, Twin Falls.

ILLINOIS

Table listing Illinois stations: Bloomington, Champaign, Chester, Chicago, Crescent City, Crystal Lake, DeKalb, Dixon, Freeport, Galesburg, Hillsboro, Jacksonville, Jerseyville, Kankakee, Lockport, Macomb, Marion, McLeansboro, Newton, Odell, Paris, Peoria, Plano, Princeton, Quad Cities, Rockford, Salem, Shelbyville, Springfield.

INDIANA

Table listing Indiana stations: Angola, Bloomington, Macon, Edwardsport, Evansville, Fort Wayne, Georgia, Hebron, Indianapolis, Marion, Michigan City, Monticello/Lafayette, Muncie, New Albany, Newport, North Webster, Putnamville, Richmond, Seymour, South Bend.

IOWA

Table listing Iowa stations: Burlington, Carroll, Cedar Rapids, Decorah, Delaware, Denison, Des Moines, Essex, Fairfield, Forest City, Fort Dodge, Hancock/Pottawattam, Iowa Falls, Lenox.

Table listing Iowa stations (continued): Maquoketa, Marshalltown, Milford, Montezuma, Ottumwa, Ringsted, Sanborn, Sioux City, St. Ansgar, Storm Lake, Van Wert, Waterloo.

KANSAS

Table listing Kansas stations: Abilene, Beaumont, Belvidere, Blue Rapids, Chanute, Concordia, Dighton, Dodge City, Ellsworth, Gem, Great Bend, Halls Summit, Hays, Kirwin, Lenora, Meade, Parker, Saint Joseph, Sharon, Topeka, Tribune, Ulysses, Wichita.

KENTUCKY

Table listing Kentucky stations: Ashland, Beattyville, Bowling Green, Burkesville, Campbellsville, Covington, East Madison County, Edmonton, Ekron, Elizabethtown, Frankfort, Frenchburg, Harlan, Hazard, Hopkinsville, Horse Cave, Irvine, Jackson, Lexington, London, Madison County, Manchester, Mayfield, Maysville, McKee, Moberly, Monticello, Morehead, Mount Vernon, Owenton, Paintsville, Phelps, Pikeville.

Table listing Kentucky stations (continued): Pineville, Somerset, Stanton, West Liberty, West Madison County, Whitesville, Williamsburg.

LOUISIANA

Table listing Louisiana stations: Alexandria, Baton Rouge, Bogalusa, Buras, Lafayette, Lake Charles, Monroe, Morgan City, Natchitoches, New Orleans, Shreveport.

MAINE

Table listing Maine stations: Caribou, Dresden, Ellsworth, Lake Bronson, Leader, Falmouth, Frenchville, Greenville, Jonesboro Marine, Meddybemps, Milo, Springfield, Sugarloaf Mtn.

MARYLAND

Table listing Maryland stations: Baltimore, Frostburg, Hagerstown, Sudlersville.

MASSACHUSETTS

Table listing Massachusetts stations: Boston, Bourne/Hyannis, Gloucester Marine, Leyden, Mt. Greylock, Worcester.

MICHIGAN

Table listing Michigan stations: Adrian / Petersburg, Alpena, Bad Axe, Cannonsburg, Copper Harbor, Crystal Falls, Detroit, Escanaba, Flint, Gaylord, Grand Marais, Hesperia, Manchester, Mayfield, Maysville, McKee, Moberly, Mount Pleasant, Munising, Newberry, Onondaga, Petoskey, Plainwell, Sandusky, Sault Ste Marie.

Table listing Michigan stations (continued): Traverse City, West Branch, West Olive, Wolf Lake.

MINNESOTA

Table listing Minnesota stations: Aitkin, Appleton, Bemidji, Clearwater, Coleraine, Detroit Lakes, Duluth, Elephant Lake, Ely, Fergus Falls, Finland, Fulda, Grand Marais, Gun Flint Lake, International Falls, Jeffers, Kensington, LaCrescent, Lake Bronson, Leader, Long Prairie, Mankato, Minneapolis/St. Paul, New Ulm, Norwood, Olivia, Springfield, Sugarloaf Mtn.

MISSISSIPPI

Table listing Mississippi stations: Aberdeen, Ackerman, Booneville, Bude, Carthage, Gulfport, Hattiesburg, Inverness, Jackson, Leakesville, Magee, Meridian, Oxford.

MISSOURI

Table listing Missouri stations: Alton, Avilla, Bloomfield, Bourbon, Branson, Cameron, Cape Girardeau, Carrollton, Cassville, Clinton, Columbia, Crocker, Doniphan.